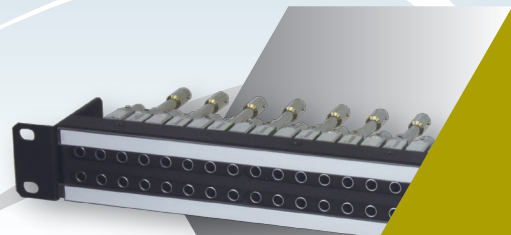


Legend

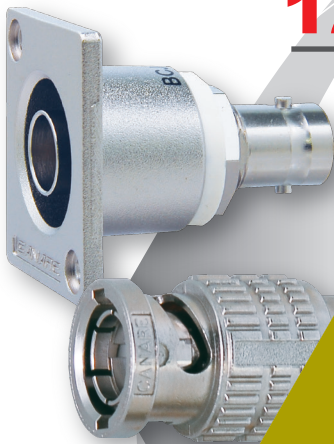
&

Innovation

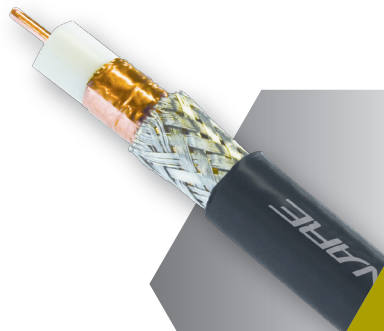


Patchbay

12G-SDI Product lines



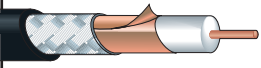



Connector



Cable

The next generation of cable, connector, and patchbay from CANARE – a provider of true 12G-SDI solution. Check out the new 12G ready products representing our legendary knowledge.

12G-SDI 75Ω Ultra Coax

Type	Model	Sales Unit	O.D.	Jacket	Weight	Inner cond		Insulation	Outer Conductors	Electrical Spec			
						Comp	O.D.			O.D.	Braid comp. (coverage)	Inner cond resist.	Outer cond resist.
		m	mm	mm	kg/100m	Q'ty/mm	mm	mm	mm/ends/carriers (%)	Ω /100m	Ω /100m	pF/m	dB/100m (6GHz)
 L-5.5CUHD Jacket color:  L-5.5CUHD:  L-3.3CUHD: 	L-5.5CUHD	100 200 500 1000	7.7	0.75	7.1	1/1.35A	1.35	5.55	Copper foil + 0.12TA/8/24 (91% or more)	1.3	1.0	52	39.1
	L-3.3CUHD	100 200	5.5	0.8	4.1	1/0.75A	0.75	3.3	Copper foil + 0.12TA/8/16 (92% or more)	4.1	1.5	55	68.5

Jacket: PVC Insulation: Formed PE Dielectric strength: AC1000V/ 1 min. Normal Characteristic impedance: 75Ω

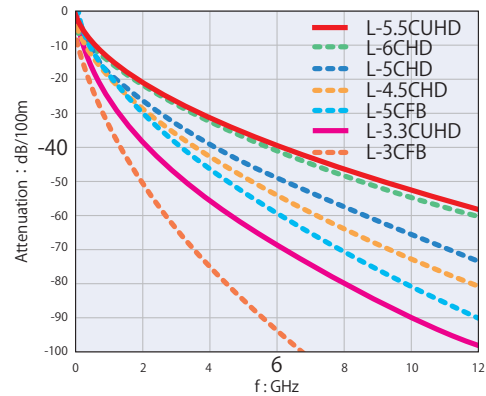
Jacket color in rectangle: Custom models. MOQ is required. (A): 3000m or longer.

L-5.5CUHD

- A 12G-SDI coax with outer diameter of 7.7mm, equivalent to a 5C coax.
- The attenuation of 12G-SDI transmission (6GHz) is 39.1dB/100m only, the lowest attenuation available from Canare equivalent coax cables.
- The transmission performance is 1.5 times better than L-5CFB, a coax with the same cable size.
(For transmission of 12G-SDI)
- For fixed installation.

L-3.3CUHD

- A 12G-SDI coax with outer diameter of 5.5mm, equivalent to a 3C coax.
- The transmission performance is 1.4 times better than L-3CFB, a coax with the same cable size.
(For transmission of 12G-SDI)
- It keeps the same performance against side pressure, while being used for rack wiring and wiring between racks.
- Canare cable stripper can be used.
- For fixed installation.



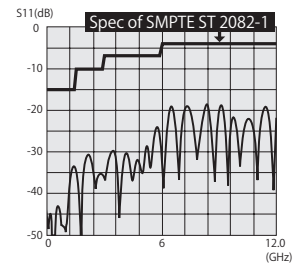
Normal attenuation of coaxial cables

12G-SDI 75Ω BNC Connector (Crimp)

Model	Suitable cable	Boot	Die set	Crimper
BCP-D55UHD	L-5.5CUHD	—	TCD-55UHD	TC-1
BCP-D33UHD	L-3.3CUHD	CB03	TCD-35CA	TC-1



BCP-D55UHD



Return loss, BCP-D55UHD

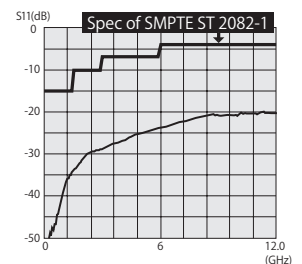
- Return loss of 15dB or more at 12GHz that keeps enough margin.
Return loss: 26dB or more at 3GHz and 15dB or more at 12GHz.
- Crimp type termination guarantees quick and reliable installation.

12G-SDI 75Ω BNC terminator

Model	Description
BCP-TK	Terminator plug
BCP-TK-CH	Terminator with string



BCP-TK



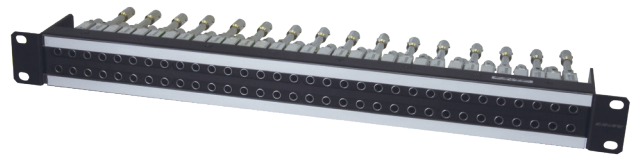
Return loss, BCP-TK

- Return loss: 26dB or more at 3GHz and 15dB or more at 12GHz.
- 1/4W resistance included.

<12G-SDI Compatible>

12G-SDI 75Ω video patchbay

Model	Panel size	CH	Specification	
			Video Jack	Color
32MCK-ST	1U	32	MCVJK-STW (Normal through with terminator)	Black
32MCK-STs	1U	32	MCVJK-STs (Straight through with terminator)	Black



32MCK-ST

12G-SDI 75Ω duo video jack

Model	Specification
MCVJK-STW	Staggered video jack, normal through
MCVJK-STs	Staggered video jack, straight through



MCVJ-STW

MCVJ-STs

- Excellent performance of return loss and isolation.
- A unique shutter mechanism at front video port preventing dust.
- Our own specific video plug must be used. Please refer to related products as below.
- Standard BNC interface at back side.

Related products

Model	Specification
MCVJ-DC	Dust cap for video jack, black, 100 pcs / pack
MCVP-C25HW	Video plug, 20 pcs / pack, suitable cable: L-2.5CHWS
MCVPC003	Micro video patchcord, 0.3m
MCVPC005	Micro video patchcord, 0.5m
MCVPC01	Micro video patchcord, 1m



MVPC01

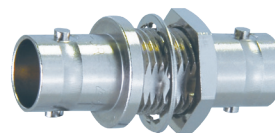


12G-SDI 75Ω BNC adapter and recetacle

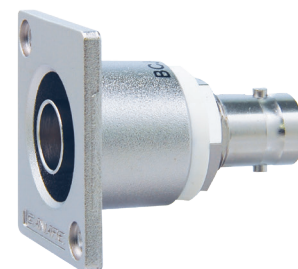
Model	Specification	Flange size
BCJ-JK	Extension adapter	—
BCJ-JRK	Panel mounted adapter	—
BCJ-JRUK	Panel mounted flange type adapter	ITT XLR-F77
BCJ-JRUDK	Panel mounted flange type adapter	Neutrik D
BCJ-JRUDBK	Panel mounted flange type adapter	Neutrik D (black)



BCJ-JK



BCJ-JRK



BCJ-JRUK

- Redesigned for 12G-SDI. Return loss performance improved.
- Return loss: 26dB or more at 3GHz, 15dB or more at 12GHz.

